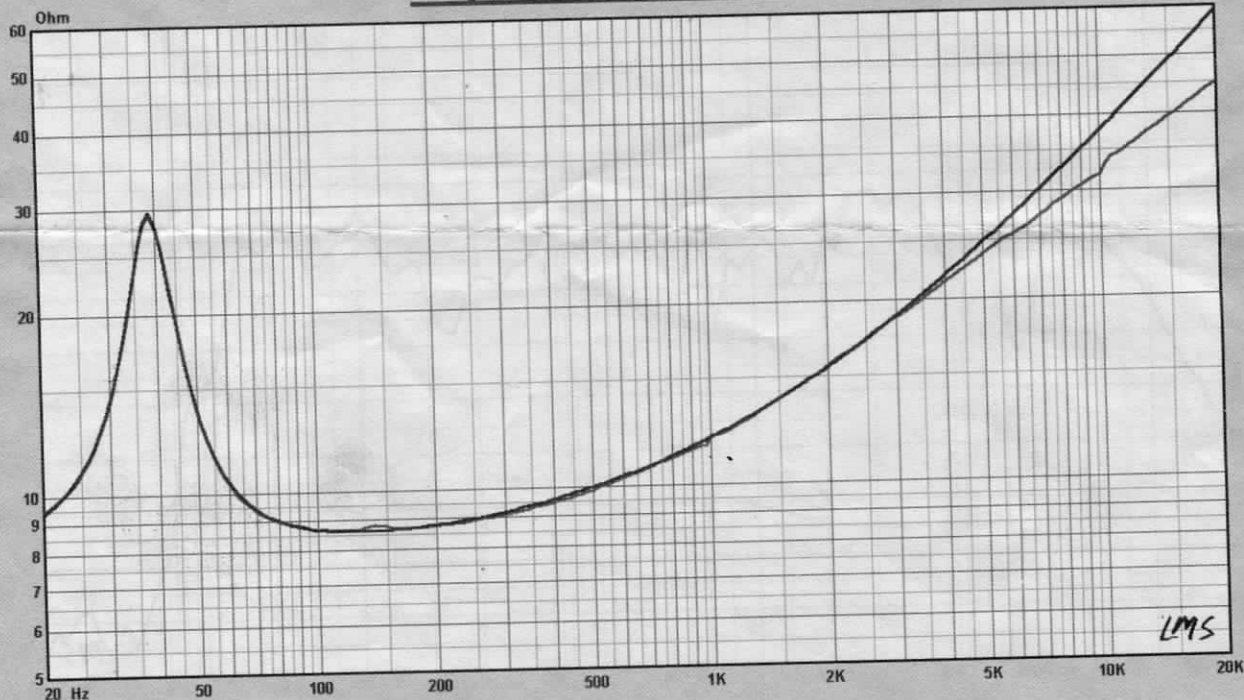




SP-W250-PP

Impedance vs Freq



Map
 — 8: Sweep
 — 9: SpkrModel: Sweep

Notes

Data Measured: Apr 2, 2004 Fri 6:17 pm

$R_{eq} = 7.900 \text{ Ohm}$ $F_0 = 38.678 \text{ Hz}$ $S_d = 39.761 \text{ msq/m}$
 $BL = 4.860 \text{ TM}$ $Q_{ms} = 4.305$ $Q_{es} = 1.590$ $Q_{ts} = 1.161$ $N_0 = 0.684\%$ $SPL_0 = 90.4 \text{ dB}$
 $V_{as} = 194.347 \text{ mcm}^3$ $C_{ms} = 865.710 \mu\text{MN}$ $K_{rm} = 2.417 \text{ mOhm}$ $E_{rm} = 0.813$
 $M_{ms} = 19.559 \text{ g}$ $M_{md} = 15.000 \text{ mkg}$ $K_{cm} = 11.881 \text{ mH}$ $E_{zm} = 0.696$

www.sphynx.be