

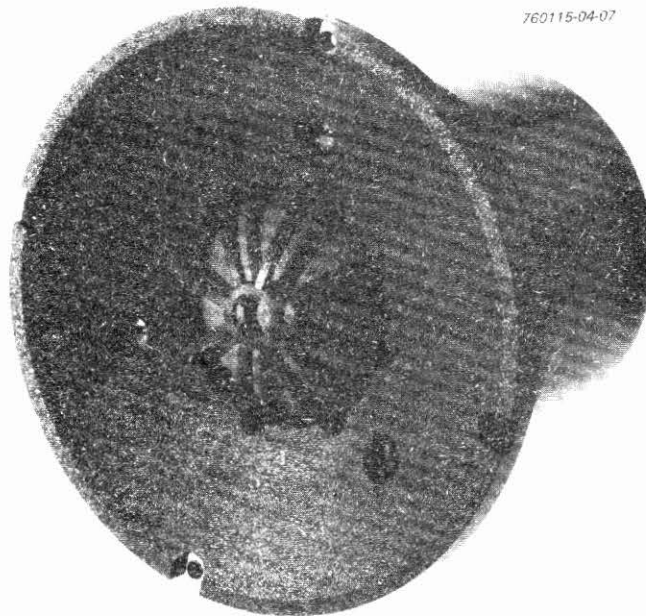
## 2 INCH HIGH POWER DOME SQUAWKER LOUDSPEAKERS

## APPLICATION

For the reproduction of audio frequencies from 500 to 5000 Hz with very low distortion in multi-way high-fidelity loudspeaker systems according to DIN 45500. The loudspeaker has an excellent spherical radiation pattern.

## TECHNICAL DATA

	version	
	Sq4	Sq8
Rated impedance	4	8 $\Omega$
Voice coil resistance	3,4	6,6 $\Omega$
Resonance frequency	340	370 Hz
Rated frequency range	550 to 5000 Hz	
Power handling capacity, loudspeaker unmounted, measured with filter		
50 $\mu$ F - 1,6 mH	60	W
24 $\mu$ F - 3,2 mH		60 W
Power handling capacity of speaker only	20	W
Operating power	5	W
Sweep voltage (100 to 10 000 Hz, filter 50 $\mu$ F - 1,6 mH 24 $\mu$ F - 3,2 mH)	4,5	V
		6,3 V
Energy in air gap	250	mJ
Flux density	0,8	T
Air-gap height	5	mm
Voice coil height	3,3	3,6 mm
Core diameter	50	mm
Magnet material	ceramic	
diameter	102	mm
mass	0,42	kg
Mass of loudspeaker	1	kg



Type AD0210/Sq4

Type AD0210/Sq. has a paper dome and textile surround, type AD0211/Sq. has a textile dome and surround, both have a sealed pot; no acoustic isolation required. Connection to the loudspeakers by means of 5,1 mm (0,2 inch) tag connectors or by soldering.

Dimensions in mm

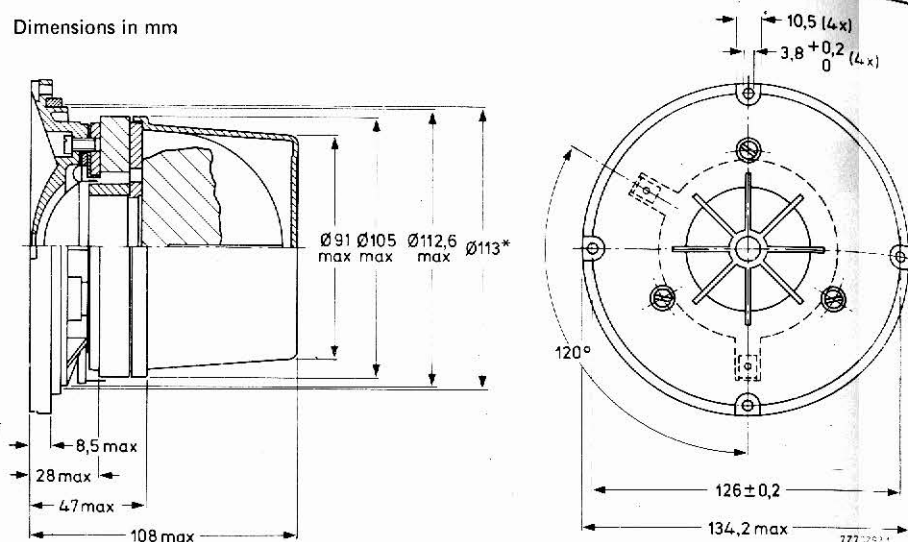


Fig. 1.

\* Baffle hole diameter 110 mm.

One tag is indicated by a red mark for in-phase connection.

**AVAILABLE VERSIONS**

**With paper dome**

AD0210/Sq4, catalogue number 2422 257 320.1  
AD0210/Sq8, catalogue number 2422 257 320.2

0 = stamped on loudspeaker magnet,  
**not to be used for ordering**

2 = for bulk packing \*\*  
6 = for single unit packing

**With textile dome**

AD0211/Sq4, catalogue number 2422 257 320.1  
AD0211/Sq8, catalogue number 2422 257 320.2

1 = stamped on loudspeaker magnet,  
**not to be used for ordering**

3 = for bulk packing \*\*  
7 = for single unit packing

**FREQUENCY RESPONSE CURVES** (see Fig. 2)

Curve a: Sound pressure measured in anechoic room, loudspeaker mounted on IEC baffle at operating power.

Curves d2 and d3: 2nd and 3rd harmonic distortion, measured at the operating power in anechoic room. Loudspeaker front mounted on IEC baffle.

\*\* Minimum packing quantity 6 per unit.

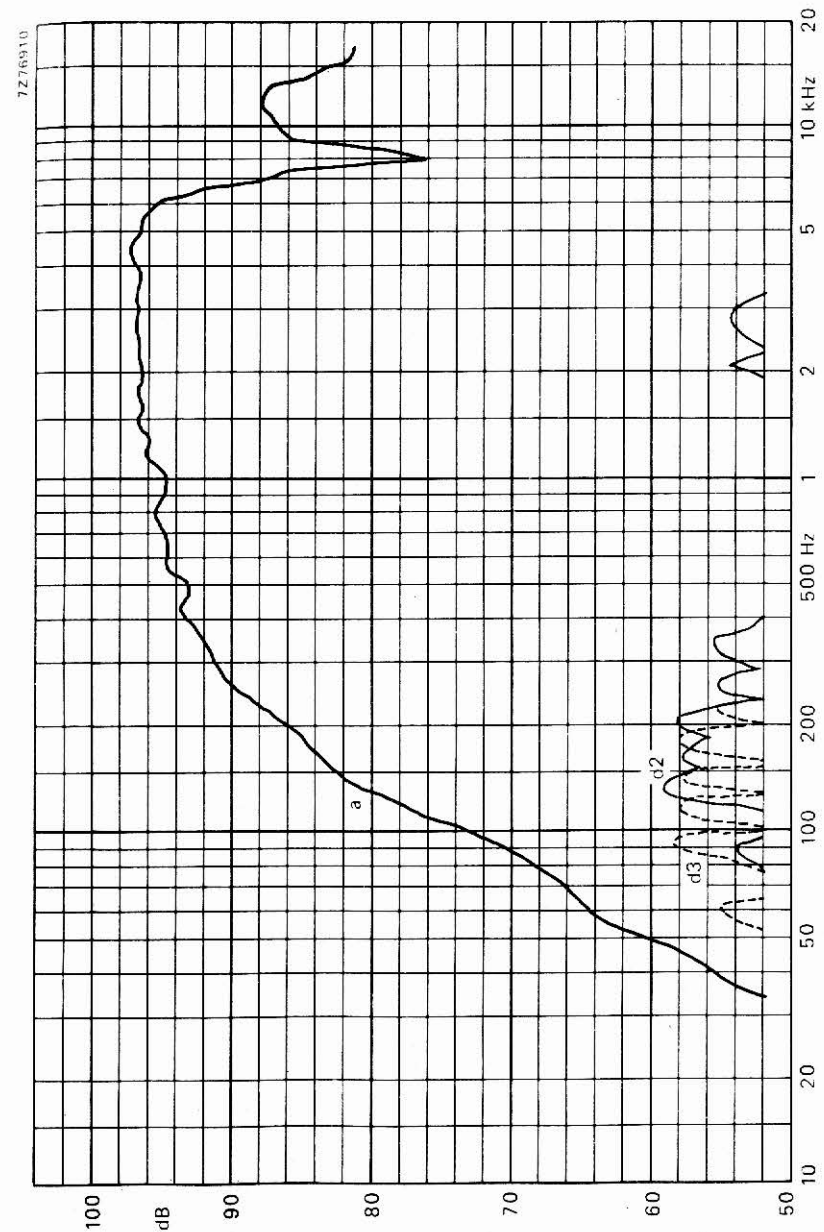


Fig. 2.



1	2	3	4	5	6						
MAIN APPL.	FREQ. RANGE	L.S. TYPE	FRAME/FRONTPL	MAGNETSYSTEM	COILFORMER	MEMBRANE	SUSPENSION	DUST CAP/DUAL CONE	GASKET	CONNECTION	REMARKS
AUDIO	MIDD RANGE	50MM DOME	MATER. FINISH PLASTIC	MAGN SIZE/CORE DIAM TYPE MATERIAL 102/50 OPEN FXD 300	MATERIAL ALU	SHAPE COLOR DOME BLACK	MATER SHAPE -----	MATERIAL COLOR -----	MATER. POSITION FOAM REAR	TYPE TAGS	DOME : TEXTILE

I. SPECIFICATIONS, LOUSPEAKER UNMOUNTED

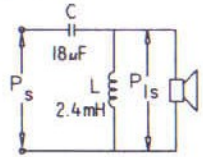
- I.1. Rated impedance : 8 Ohm
- I.2. Voice coil resistance : 6.9 ± 10 % Ohm
- I.3. Resonance frequency : 360 ± 15 % Hz
- I.4. Sweep voltage : 12.6 Volt  
(with filter, see III)
- I.5. Magnetic flux density : 0.90 T
- I.6. Magnetic strayfield : ----- x 10<sup>-4</sup> T
- I.7. Loudspeaker mass : 1000 g
- I.8. Electromech. force factor : ----- Wb/m
- I.9. Effective piston area : ----- cm<sup>2</sup>
- I.10. Total moving mass : ----- g
- I.11. Equivalent volume : ----- dm<sup>3</sup>
- I.12. Electrical quality factor : -----
- I.13. Mechanical quality factor : -----
- I.14. Total quality factor : -----

II. SPECIFICATIONS, LOUSPEAKER MOUNTED

- Mounting condition : in box of ----- dm<sup>3</sup>  
on IEC baffle
- II.1. Charact. sensitivity : 90.0 ± 1.5 dB/W/m
- II.2. Rated freq. range : 5.0 KHz
- II.3. Resonance frequency : 360 Hz
- II.4. Sweep voltage : 15.5 Volt

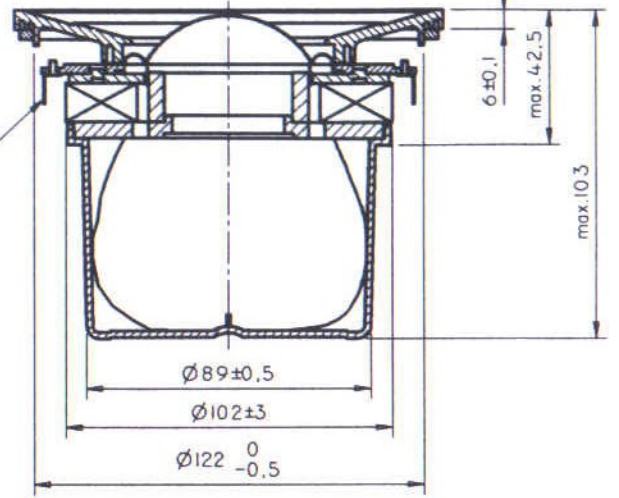
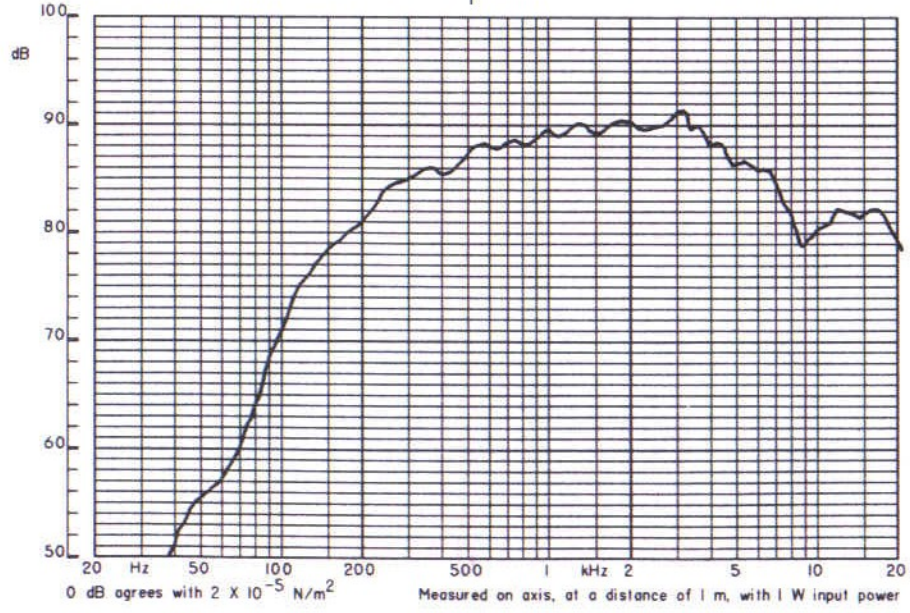
III. POWER SPECIFICATIONS (in Watt)

- Measuring condition :  
- unmounted / mounted (see II)  
- cross-over freq. : 750 Hz  
- filter :



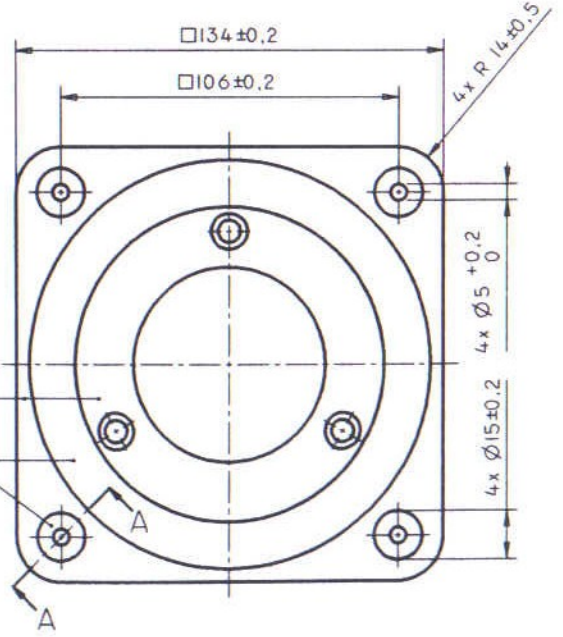
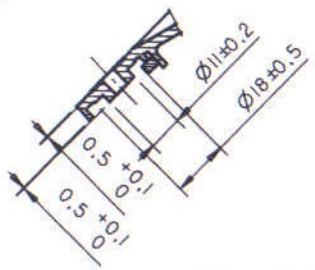
	P <sub>s</sub>	P <sub>Is</sub>
III.1. Long term max. input power :	60	
III.2. Maximum noise power (PHC) :	30	

- III.1. Long term max. input power :
- III.2. Maximum noise power (PHC) :
- Continuous / Intermittant



Vertical plug-on tabs tinned  
2x(2,8x0,5-0,110")

A-A



NLN 9-127-D249

NLN 9-125-D249

Specifications and test methods are based upon IEC 268-5 and supplemented in general specification DDV 62-41-006  
Quality and reliability in accordance with DDV 62-31-007  
The manufacturer reserves the right to introduce changes of minor importance without notice

CLASS NO.	CUSTOMERS SPECIFICATION		Proj.	
BF 015	AD 02110/SQ8		2422 257 32202	
NAME	Verstuift E.	SUPER	1	7905-31
DATE	78.06.30	VERV.	590 - 01	7908-34
CHECK		CONTR.	10	87.11.13
				89.11.20
				A3

PROPERTY OF N. V. PHILIPS' GLOELAMPENFABRIEKEN Eindhoven-NEDERLAND